



*Activities Book*

2026-2027



### FACILITY PHONE NUMBERS

Quentin Burdick Arena .....	662-8418
Recreation Office .....	662-8243
Recreation Office: Fax .....	662-2113
Dockside Entertainment .....	662-4835
Roosevelt Park/Bill Jerome Arena .....	662-3600
Ruger Park Pool & Warming House .....	662-8976
Creel Bay Golf Course .....	662-2408

## SUMMER PROGRAM REGISTRATION

Registration for the Devils Lake Park Board Summer Programs will begin May 6th at 7:30am. You can **register Online** by going to the Devils Lake Park Board website ([www.dlparkboard.org](http://www.dlparkboard.org)) and clicking on the Online Registration Link.

If you are unable to do online registration, you can register at the Recreation Office on May 6th from 7:30am-5:00pm.

However, if you are requesting scholarships, you will need to register *in person* at the Recreation Office.

**NO REGISTRATION WILL BE TAKEN BEFORE THIS DATE**

## Knights Athletics

### Summer Programs!

**May 26th - August 14th**

### YOUTH WORKOUTS Hours

**Monday-Friday**  
7:00am-8:15am  
8:30am-10:00am

\$300 (3 Days/Week)  
\$350 (Unlimited Days)  
\*amount for whole summer\*



Contact info: Call Brady (701)739-1376 OR  
Email: [whiteknightscrossfit@gmail.com](mailto:whiteknightscrossfit@gmail.com)

<i>Park Information &amp; Park Board Facilities .....</i>	<i>3-5</i>
<i>Parks &amp; Recreation Sites Map .....</i>	<i>5</i>
<i>Schedule of 2025-26 Activities .....</i>	<i>6</i>

### SUMMER PROGRAMS

<i>College For Kids .....</i>	<i>7</i>
<i>Aquatics .....</i>	<i>8</i>
<i>Baseball .....</i>	<i>9</i>
<i>Softball .....</i>	<i>10</i>
<i>Theatre .....</i>	<i>10</i>
<i>Arts &amp; Crafts .....</i>	<i>11</i>
<i>Home Alone: Are you ready? .....</i>	<i>11</i>
<i>Babysitting.....</i>	<i>11</i>
<i>Summer Volleyball Camp.....</i>	<i>11</i>
<i>Junior Chefs .....</i>	<i>11</i>
<i>Summer Camp Schedules .....</i>	<i>12</i>
<i>Athletic Performance Camp.....</i>	<i>12</i>
<i>Youth &amp; Adult Golf .....</i>	<i>13</i>
<i>Kids Fishing Camp .....</i>	<i>14</i>
<i>Summer Reading Program .....</i>	<i>15</i>
<i>14k Fallen Soldier Run/Walk.....</i>	<i>15</i>
<i>4H Achievement Days Schedule .....</i>	<i>16</i>
<i>Hunters Safety Course .....</i>	<i>16</i>

### FALL, WINTER AND SPRING PROGRAMS

<i>Youth &amp; Adult Hockey .....</i>	<i>17</i>
<i>ATA Martial Arts.....</i>	<i>17</i>
<i>LR Skating Club, DL Blue Line Club .....</i>	<i>17</i>
<i>Ice Arenas, Ice Skating &amp; Ice Rentals .....</i>	<i>18</i>
<i>Winter Swimming .....</i>	<i>18</i>
<i>Youth After School Programs .....</i>	<i>19</i>
<i>Dockside Entertainment.....</i>	<i>20</i>

# **WELCOME FROM THE STAFF & COMMISSIONERS**

*The Devils Lake Park Board Staff and Commissioners welcome everyone once again to participate in our programs and activities and to make use of our facilities to make your leisure time more enjoyable and relaxing. Our mission is to promote and provide broad-based recreational programs to all the citizens of Devils Lake and the Lake Region area in order to improve the quality of life in our area.*

*This Activities Booklet contains the majority of our events and programs but more may be added as the year progresses and the need arises. We have tried to keep our activity fees as reasonable as possible.*

***On-line registration process for all individual participation activities is available May 6 @ 7:30am.***

*We would like to take this opportunity to thank the many businesses, fraternal organizations, clubs, and individuals that support us throughout the year. These groups and individuals make it possible for us to provide the wide range of programs and facilities we offer to the Lake Region and our visitors.*

*We look forward to this coming year with excitement and enthusiasm as we once again have a number of events scheduled for the coming year.*

## **ADMINISTRATION**

STEVE GEIGLE.....Supt. of Parks & Recreation  
SARAH COENEN.....Finance Manager  
JEFF BRUSVEN.....Dockside & Community Engagement Manager  
MATTHEW BECK.....Equipment & Operations Manager  
BRENT SCHMITZ.....Parks & Facilities Manager  
ROB MCIVOR.....Golf Course Clubhouse Manager/Recreation Manager  
ANDY HOKANSON.....Golf Course Grounds Superintendent  
JOSH WIDMER.....Rec Manager/Concessions Manager  
GAGE MEYER.....Maintenance Technician

### **PARK BOARD COMMISSIONERS**

Jamie Beck ..... President  
Kale Stromme ..... Vice President  
Mark Beighley ..... Commissioner  
Kelli Heilman..... Commissioner  
Peter Jerome ..... Commissioner

### **FACILITY PHONE NUMBERS**

Quentin Burdick Arena ..... 662-8418  
Recreation Office ..... 662-8243  
Dockside Entertainment ..... 662-4835  
Roosevelt Park/Bill Jerome Arena ..... 662-3600  
Ruger Park Pool & Warming House ..... 662-8976  
Recreation Office-Fax Number ..... 662-2113  
Creel Bay Golf Course ..... 662-2408

## ***GENERAL INFORMATION***

**OFFICE HOURS:** Office staff is available from 8:00am - 12:00 noon and 1:00 - 5:00pm at the Park District office in Dockside Entertainment. Monday through Friday. Phone 662-8243.

**WEBSITE/E-MAIL:** The Devils Lake Park Board website is [www.dlparkboard.org](http://www.dlparkboard.org) and the email address is [dlparkboard@gondtc.com](mailto:dlparkboard@gondtc.com). The Creel Bay Golf Course website is [www.creelbaygolf.com](http://www.creelbaygolf.com). Dockside Entertainment website is: [docksidedl.com](http://docksidedl.com)

**REGISTRATION:** Registration for summer programs will begin May 6<sup>th</sup>. You can register on-line by going to the Devils Lake Park Board website ([www.dlparkboard.org](http://www.dlparkboard.org)) and clicking on the Online Registration Link. If you are unable to do on-line registration you can register at the Recreation Office on May 6<sup>th</sup> from 7:30 a.m.-5:00 p.m. If you are requesting scholarships you will need to register in person at the Recreation Office on May 6<sup>th</sup>. No phone registrations will be taken. No registration will be taken before these dates.

**PAYMENT OF FEES:** Fees are to be paid at the time of registration.

**REFUNDS:** The Devils Lake Park Board has a **NO REFUND** policy for all programs unless the program is cancelled. Absolutely no refunds once a program begins.

**SCHEDULING:** The Devils Lake Park Board reserves the right to adjust scheduling, if necessary, based on the availability of instructors, facilities, and number enrolled in program. If program changes are made, those registered will be notified.

**INSURANCE:** The Devils Lake Park Board does not carry medical or accident insurance for the participants of its programs. The cost of doing so would be so high that fees charged for programs would become prohibitive. We suggest that you review your family's personal health insurance plan to be sure that it provides you with sufficient coverage. We also recommend that all participants check with family physicians before participating in any program that requires physical exertion.

**SCHOLARSHIPS:** Youth activity scholarship money for low-income households is available through the Recreation Office. Families that are in need of assistance with payment of fees for Devils Lake Park Board programs may apply at the Recreation Office. Scholarships are not available for golf season passes. **PROOF OF INCOME IS REQUIRED TO APPLY FOR A SCHOLARSHIP.**

**NON-DISCRIMINATION POLICY:** The Devils Lake Park Board's facilities and programs are open to all persons regardless of race, color, national origin, age, gender or physical ability. The Devils Lake Park Board actively seeks and supports participation by persons with disabilities in recreational programs and services. To ensure that your needs are met, please contact the Recreation Office.

**GIFTS AND BEQUESTS TO THE DISTRICT:** The Devils Lake Park Board accepts devices, legacies, bequests, and gifts. Title to the property, real, personal, or mixed shall be held in trust under the terms and conditions provided. Unless otherwise provided, no part of such property or the income from the property shall be diverted or used for any other purpose.

**ZERO TOLERANCE POLICY:** The Devils Lake Park board has a zero tolerance policy for all activities. The policy states: inappropriate and disruptive behavior by any parents, participants, and/or spectators will not be tolerated. This behavior shall include, but not limited to: \* using obscene or vulgar language in a boisterous manner at any time \* taunting players, coaches, officials, or other spectators, by means of baiting, ridiculing, threatening physical violence, or using physical violence, throwing any object in the spectators viewing area, that in any way, creates safety hazards. Any violators to this policy will be removed from the premises, and will not be allowed to return until the next day. We encourage everyone to enjoy the game and support all players, coaches and officials.

**\*\*CANCELLATIONS:** Any cancellations because of the weather or any other circumstances can be heard on KDLR-AM, KZZY-FM & KQZZ-FM radio.

## ***Park Information & Park Board Facilities***

**PARK HOURS:** 6:00 a.m. to 11:00 p.m.

**SPEED LIMIT:** 15 MPH unless otherwise posted.

**PARKING:** Vehicles must be parked in designated parking areas only. Parking on grass and off roads is not permitted, unless prior approval for special events.

**CAMPFIRES:** Open fires are not allowed in parks. All cooking fires are restricted to grills.

**METAL DETECTION:** Individuals wishing to treasure hunt with metal detection devices in the parks must first stop at the Recreation Office to receive guidelines and sign a permission form.

**ALCOHOLIC BEVERAGES:** Persons must comply with city ordinances regarding consumption of alcoholic beverages. NO GLASS BOTTLES CONTAINING ALCOHOLIC BEVERAGES ALLOWED.

**GLASS CONTAINERS:** GLASS CONTAINERS ARE NOT PERMITTED IN CITY PARKS.

**PLAYGROUND AREAS:** The Devils Lake Park Board maintains playgrounds in Ruger, Roosevelt, Lakewood, Southside and Roundhouse Parks. These playgrounds are sand-based or wood fiber to reduce injury from the most common playground accidents-falls. The Park Board takes pride in these playgrounds and we ask your assistance in keeping them clear of all debris, especially glass. There is also an indoor playground located inside Dockside Entertainment Center.

**PICNIC SHELTER RESERVATION POLICY:** The enclosed picnic shelters at Roosevelt and Ruger Parks may be reserved through the Receptions Office. Reservations must be made 24 hours in advance:

Rental Fees:     \$40.00 / Ruger Picnic Shelter  
                      \$150.00 / Pascal Pavilion @ Roosevelt  
                      \$150.00 / Ruger Activity Building

*A \$25.00 refundable deposit is required for picnic shelter rentals. The deposit will be refunded if the shelter is left clean.*

**PARK CONCESSIONS** - Concessions will be available during tournaments and any other major events at Roosevelt and Ruger Parks. The Devils Lake Park Board provides concessions.

**DOCKSIDE ENTERTAINMENT** - 807 Hwy 20 South Suite 1

This facility includes a 6-Lane bowling alley, 5 simulator bays, indoor playground, pickleball courts, multipurpose court, meeting/party rooms, concession stand, walking track, arcade & the Park District Offices are located here.

**ROOSEVELT PARK**- (21.2 acres) 4<sup>th</sup> Street Southwest

This park provides three outdoor shelters, picnic tables, grills, five softball diamonds (one lighted), concession stand, restroom facilities, playground equipment, three horseshoe courts, baseball field (lighted), two sand volleyball courts, flower beds, Bill Jerome Indoor Sports Arena, skate park and band shelter. A new activity building opened in May 2025.

**RUGER PARK** - (114.9 acres) 5<sup>th</sup> Avenue & 12<sup>th</sup> Street North

This park provides playground equipment, four softball fields, Cal Ripken Field, swimming pool with slide, outdoor fitness area, restroom facilities, concession stand, flower beds, wildlife habitat, sand volleyball courts, activities building, two outdoor shelters, picnic tables, skating rink with boards, two outdoor basketball courts, walking path, dog park, fishing pond, disc golf course and soccer complex.

**ROUNDHOUSE PARK** - (4 acres) 11<sup>th</sup> Street NW

This community park located in the Roundhouse Subdivision is equipped with playground equipment, a soccer field, basketball court and picnic shelter.

**MIKE DOSCH MEMORIAL SWIMMING POOL** - Ruger Park

The Mike Dosch Memorial swimming pool and water slide will tentatively open on Monday, June 1st. The pool complex includes a heated main pool, water slide and intermediate pool for young children. The bathhouse is completely enclosed and heated. The pool is located next to the playground at Ruger Park and close to the softball/baseball complex. We will be providing a full range of swimming lessons and other activities throughout the summer. There is also time set aside for family swimming, lap swimming, aerobic/adult swimming and other activities. Other activities will be announced through the local media. The pool deck has been expanded to allow for a larger viewing area.

The pool is also available for rental and special activities. Please contact the Recreation Office for further information. The schedule of pool activities and swimming lessons is found under the Aquatics Section in this booklet. We encourage everyone young and old to come out and use the pool for your enjoyment.

**ODD FELLOWS PARK** - (0.1 acres) 14<sup>th</sup> Avenue & 6<sup>th</sup> Street

This park provides wildlife habitat, open space and a sledding hill during the winter months.

**LAKWOOD PARK** - (18.03 acres) Lakewood

This park provides a new playground, restroom facilities, one ball field, lighted outdoor hockey rink, basketball courts, picnic tables, picnic shelters and grills. A boat ramp, fishing pier, sand beach and dock are also located close by. A bike path connects Lakewood Park to the City of Devils Lake.

**SOUTHSIDE PARK** - (3.4 acres) 8<sup>th</sup> Ave. SE

This neighborhood park located south of Macs Hardware is equipped with new playground equipment, picnic shelter and outdoor basketball court.

**ROTARY CLUB TENNIS COMPLEX** - 14<sup>th</sup> Ave. & 3<sup>rd</sup> Street

This complex includes two lighted tennis courts and a basketball court and pickleball courts.

**QUENTIN BURDICK SPORTS ARENA** - 501 Firebird Ln NW

The Quentin N. Burdick Sports Arena is a multi-purpose facility located on the north end of the City of Devils Lake. This facility has a regulation size ice sheet, six locker rooms, refrigeration room, a resurfacing machine room, lobby area, meeting room, storage room and coach's room; seating for 1,800. For concerts, graduations, etc., it can seat 2,000 people. This facility is used by the people of the Lake Region for many activities and the possibilities for the Quentin Burdick Sports Arena are unlimited. For rental information, call 662-8243.

**BURDICK OUTDOOR RINK** - 501 Firebird Ln NW

The Burdick Outdoor Rink was completed in 2008. It is a 200' X 85' concrete lighted rink with dasher boards and plexi-glass. It is used in the winter for a hockey/ice skating rink and a roller hockey rink & pickle ball court in the spring, summer & fall.

**BILL JEROME ARENA - Roosevelt Park**

This building was one of the first hockey arenas in North Dakota. The arena is named after the late Bill Jerome, a well-known Devils Lake businessman who made countless contributions to Devils Lake and North Dakota Hockey Programs. The arena is heavily used in the winter for hockey practices and games and may be rented for \$300/day or \$50/hour throughout the year.

**CREEL BAY GOLF COURSE - 515 Country Club Rd**

The Devils Lake Park Board became owner of the Creel Bay Golf Course on January 1, 2016. This is an 18 hole, par 72 course. This course also comes with a newly built clubhouse which includes a Pro-shop, Bar and Snack area. The Clubhouse is available for rental for various events such as wedding receptions, grooms suppers, graduation receptions, holiday parties, class reunions, business meetings, golf tournaments, etc. Max occupancy is 150. For rental availability and rates please call 662-2408. A floating dock system & boat slips were added in the Spring of 2021. Kayak rentals are also available. New cart paths were completed in the fall of 2021.

# ***PARKS AND RECREATION SITES***



# DEVILS LAKE PARK BOARD

## SCHEDULE OF ACTIVITIES & EVENTS

May 1, 2026 - April 12, 2027

May 6	Summer Program On-line Registration Begins @ 7:30am Summer
May 6	Program Registration 7:30am-5pm @ Recreation Office
May 11-13	Adult Softball Begins
May 30 - 31	Devils Run Car Show
June 1	Swimming Pool Opens (Tentative)
June 1	Youth Summer Programs Begin
June 8 - 28	Summer Ice at Burdick Arena
June 20 -21	Men's & Women's Busch Light Slow-pitch Softball
July 4	Devils Lake 250th USA Celebration
August 2-6	Lure 'em for Life Kid's Fishing Camp at Lakewood
August 22 - 23	Coed Softball Tournament
September 1	Youth Flag Football and Girls Basketball Begins (Tentative)
October 12	Youth Hockey Begins
December 1	Youth Boys Basketball Begins (Tentative)
December 11 - 13	Girls 10U/12U Hockey Tournament
January 15 - 17	VFW Pee Wee Hockey Tournament
January 29 - 31	John & Pat Olsen Memorial Squirt Hockey Tournament
February 19 - 20	DLPB Mite Hockey Jamboree
March 1	Youth Volleyball Begins (Tentative)
March 19 - 21	Lake Region Skating Club Ice Show
April 2 - 4	Boat/Camper Show
April 12	Youth Soccer Begins (Tentative)



**REGISTER ON-LINE (instructions inside front cover)**

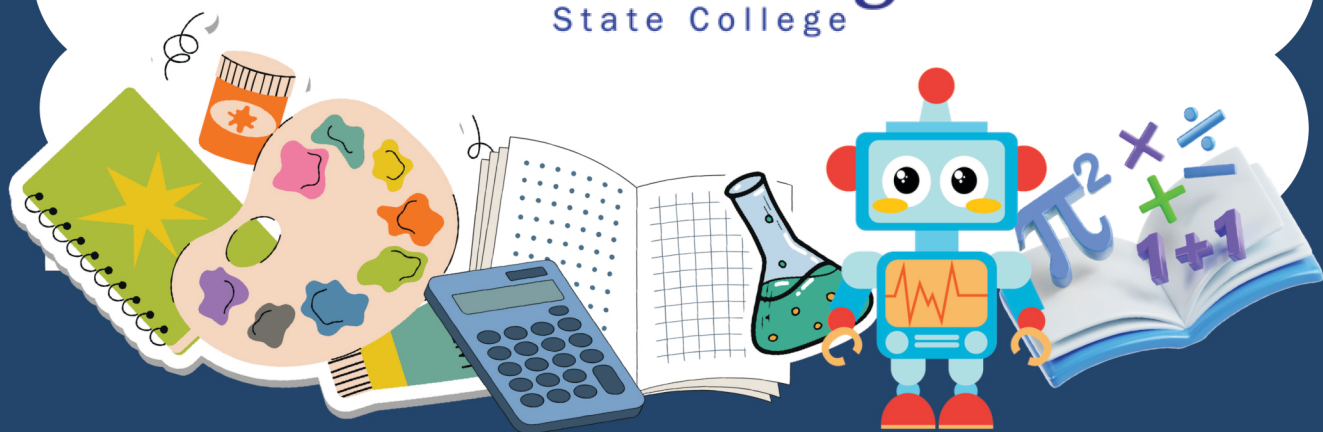
# SAVE *the* DATE

## COLLEGE STEAM FOR KIDS

JULY 13-16, 2026

REGISTRATION OPENS MAY 1<sup>ST</sup>, 2026

 **Lake Region**  
State College



# 2026 SUMMER PROGRAMS

## AQUATICS

**REGISTER ON-LINE (instructions inside front cover)**

**POOL LOCATION:** Ruger Park, 5<sup>th</sup> Avenue North, 662-8976.

**POOL OPENING POLICY:** The air temperature must be at 65 degrees by 1:00 p.m. for the pool to open for the after-noon session. If it does reach 65 degrees by 4:00 p.m., the pool will open at 5:00 p.m. for the family and evening session. If the minimum air temperature is reached, a half hour grace period will be allowed for the required 10 swimmers or more. Please listen to the Radio or call the pool to verify opening of pool before dropping off children. The accepted air temperature reading will be from KDLR/KDVL radio station.

### DAILY SCHEDULE:

#### Monday-Friday:

June-July	August
10:00 a.m. - 12:00 Noon	Lessons
12:00 Noon - 1:00 p.m.	12:00 Noon- 1:00 p.m. Lap Swim (M-F)
1:00 p.m. - 4:00 p.m.	1:00 p.m. - 4:30 p.m. General Admission
4:00 p.m. - 5:00 p.m.	Lessons
5:00 p.m. - 5:30 p.m.	5:00 p.m. - 5:30 p.m. Lap Swim (M-F)
5:30 p.m. - 6:30 p.m.	5:30 p.m. - 6:30 p.m. Family Swimming
6:30 p.m. - 8:30 p.m.	6:30 p.m. - 7:30 p.m. General Admission
8:30 p.m. - 10:00 p.m.	7:30 p.m. - 9:00 p.m. Private Rentals

#### Saturday & Sunday:

June-July	August
11:30 a.m. - 1:00 p.m.	11:30 a.m. - 1:00 p.m. Private Rentals
1:00 p.m. - 4:30 p.m.	1:00 p.m. - 4:30 p.m. General Admission
5:00 p.m. - 6:30 p.m.	5:00 p.m. - 6:30 p.m. Family Swimming
6:30 p.m. - 8:30 p.m.	6:30 p.m. - 7:30 p.m. General Admission

### ADMISSION RATES:

Daily: Under two years of age Free in wading pool (accompanied by an adult)

Wading Pool Admission \$2.00/session  
(2 years & older)

General Admission \$5.00/session  
(6 years & older)

Lap Swim \$3.00/session  
(18 years & older) Free with season pass

Family Swim \$3.00/session  
(16 years & older or accompanied by adult)

Season Passes:

Lap \$ 50.00  
Single \$ 65.00  
Family \$155.00

(Includes only members of same household)

**Pool Rentals:** \$150.00 including staff for 1 1/2 hour, pool & slide. For further information, contact the Recreation Office at 662-8243. Must be pre-paid at the pool.

### GENERAL SWIMMING POOL RULES:

*Rules are important to ensure the safety of the participants.*

- 1) Shower before entering the pool area and after using suntan lotion.
- 2) No shoes in the pool area. Aqua sox will be allowed.
- 3) No street clothes, or cut-offs allowed in the water.
- 4) No strollers, chairs, or car seats allowed in pool area.
- 5) Only adults are allowed by the edge of wading pool.
- 6) No food, beverages, gum, use of tobacco (chewing/smoking) allowed in pool area.
- 7) No glass containers in pool or locker room area.
- 8) No portable stereos or stereo headphones in pool area.
- 9) No flotation devices (such as beach balls, inner tubes, etc.) or masks, during general admission. Swim goggles are allowed.
- 10) No pushing, dunking, splashing, running or diving allowed.
- 11) Not responsible for lost or stolen articles.
- 12) For safety reasons infants and toddlers must wear swim diapers.
- 13) No swimmer allowed in water deeper than shoulder height, unless they can prove they can swim.
- 14) Any child 8 years of age or younger must be accompanied by a guardian 12 years of age or older

### RED CROSS WATER SAFETY INSTRUCTION:

**Swimming Lessons:** \$45.00 / session

- |                       |                                    |
|-----------------------|------------------------------------|
| 1 <sup>st</sup> ..... | June 1 - 11 @ NDS                  |
| 2 <sup>nd</sup> ..... | June 15 - 25 @ Ruger Park Pool     |
| 3 <sup>rd</sup> ..... | June 29 - July 9 @ Ruger Park Pool |
| 4 <sup>th</sup> ..... | July 13 - 23 @ Ruger Park Pool     |

**\*\*\*Each participant is only allowed to sign up for one lesson at the time of registration. You will be allowed to sign up for additional lessons once the pool opens for the season if slots are still available.**

### 2026 SWIMMING LESSON SCHEDULE

#### Session 1 - NDS

- |                 |         |
|-----------------|---------|
| 10:00-10:30am   | 2, 3, 4 |
| 10:30-11:00am   | 1, 3, 5 |
| 11:00-11:30am   | 2, 4, 6 |
| 11:30 - 12:00pm | 1, 3, 5 |

#### Session 2

- |                |            |
|----------------|------------|
| 10:00-10:30 am | 1, 2, 4,   |
| 10:30-11:00 am | 2, 3, 4    |
| 11:00-11:30 am | 1, 3, 5    |
| 11:30-12:00 pm | T, 1, 3, 4 |
| 4:00-4:30 pm   | T, 2, 3, 5 |
| 4:30-5:00 pm   | T, 1, 4, 6 |

#### Session 4

- |                |            |
|----------------|------------|
| 10:00-10:30 am | 3, 4, 5    |
| 10:30-11:00 am | 1, 2, 4    |
| 11:00-11:30 am | 1, 2, 5    |
| 11:30-12:00 pm | T, 1, 3, 4 |
| 4:00-4:30 pm   | T, 1, 2, 4 |
| 4:30-5:00 pm   | T, 2, 3, 6 |

**Toddlers - MUST BE 3  
Level 1 - MUST BE 5**

#### Session 3

- |                |            |
|----------------|------------|
| 10:00-10:30 am | 1, 3, 4    |
| 10:30-11:00 am | 1, 2, 5    |
| 11:00-11:30 am | 1, 2, 4    |
| 11:30-12:00 pm | T, 2, 3, 4 |
| 4:00-4:30 pm   | T, 2, 5, 3 |
| 4:30-5:00 pm   | T, 1, 3, 6 |



*Lessons are Monday-Thursday, Friday is a make-up day. Numbers and letters represent levels of achievement (T=toddler).*

*\*Must be a minimum of 4 participants per class for class to be held.*

# BASEBALL

## REGISTER ON-LINE (instructions inside front cover)

Registration for youth baseball will begin May 6<sup>th</sup> at the Recreation Office and on-line. Fees listed include team T-shirt. Players will not receive a T-shirt until fees are paid. Practices and games will be played at both Roosevelt Park and Ruger Park. Some games will be played at night throughout the season for Squirts & Pee Wees. Complete practice and game schedules will be handed out the first week of practice.

## T-BALL:

Players will be assigned to teams by the Baseball Coordinator and players will be told their team name and coach the first night of practice. All players must have their own glove. Skill needed: To be able to hit the ball from baseball T.

AGE: 5 & 6 year olds - Players must turn 5 years old by September 1<sup>st</sup> of the current year to participate in T-ball.  
LOCATION: Ruger Park Complex (1<sup>st</sup> Day)  
DATES: June 1 - July 22  
DAY/TIME: Monday & Wednesday 5:00-5:40 p.m.  
FEES: \$35.00

## MITES:

This program will feature coaches pitching underhand to players and teaching fundamentals. Players will be assigned to teams by the Baseball Coordinator and players will be told their team name and coach the first night of practice. All players must have their own glove.

AGE: 7 & 8 year olds - Players must turn 7 years old by September 1<sup>st</sup> of the current year to participate in Mites.  
LOCATION: Ruger Park Complex (1<sup>st</sup> Day)  
DATES: June 1 - July 22  
DAY/TIME: Monday & Wednesday 5:45-6:30 p.m.  
FEES: \$40.00

## SQUIRTS:

Players will be divided up into teams the second week of practice. Game times will vary and there will be some evening games. Emphasis will be placed on fundamentals of the game and teamwork. There will be a couple skills clinics offered during the season.

AGE: 9 & 10 year olds - Players must turn 9 by September 1<sup>st</sup> of the current year to participate in Squirts.  
LOCATION: Ruger Park Complex  
DATES: June 1 - July 23  
DAY/TIME: (M-Th) 10:40 - 12:00  
Game times will vary. There may be some Friday activities.  
FEE: \$50.00

## PEE WEE:

Players will be divided into teams the second week of practice. Game times will vary and there will be some evening games. Players will do their own pitching at this level. There will be a couple skills clinics offered during the season.

AGE: 11-12 year olds - Players must turn 11 by September 1<sup>st</sup> of the current year to participate in Pee Wees.  
LOCATION: Ruger Park Complex  
DATES: June 1 - July 23  
DAY/TIME: (M-Th) 9:00-10:30am  
Game times will vary. There may be some Friday activities.  
FEES: \$55.00

## BABE RUTH BASEBALL: (Ages 13-15)

The Babe Ruth Baseball Program will begin on Tuesday, May 26 from 4:00-5:30 p.m. at Diamond 5 located at Roosevelt Park. Players must be born from May 1, 2010 to April 30, 2013 to be eligible to play Babe Ruth Baseball. Players born after April 30, 2013 are not allowed to move up to Babe Ruth unless approved by the Youth Baseball Coordinator. The Babe Ruth Baseball players will participate in the Lake Region Babe Ruth League and will also play a few out of town teams and participate in a couple of tournaments during the season. Parents may be responsible for transporting the players to out of town games and tournaments. Players must furnish their own gloves and gray baseball pants. Practice times & games will be determined by the coaches *This will be a non-advancing league.* For competitive BR League, contact Tim Greene @ 739-9195.

LOCATION: Roosevelt Park Diamond 5  
DATES: May 26 - July 26  
AGE: 13-15 year olds  
FEES: \$135.00

## DEVILS LAKE LEGION BASEBALL:

The Devils Lake Legion Baseball Program is sponsored by the Legion Organization and is for boy's ages 16-18 years old. Legion Baseball is healthy competitive baseball for those who truly enjoy the sport of baseball. If you need more information about this program or would like to play for the Legion Baseball Team, contact Tim Greene at 739-9195.



# SOFTBALL

## REGISTER ON-LINE

(instructions inside front cover)

### PONYTAIL SOFTBALL (Slowpitch):

Players must furnish their own gloves. Team T-shirts will be provided. Girls will be divided into teams after the first week of practice. Practices and games will be played at Roosevelt Park. There will be some out of town games and game times may vary.

LOCATION: Roosevelt Park Diamonds  
 DATES: June 1 - July 23  
 DAY/TIME: Practice - Mon., Tues. & Thurs. from 10:30am - 12:00 noon  
 Games - (Times TBA) starting the 3rd week.  
 AGE: 9-12 Years-Participants must turn 9 years of age by September 1<sup>st</sup> of the current year to participate in Ponytails.  
 FEES: \$50.00

### GIRLS FASTPITCH SOFTBALL:

Players must furnish their own gloves. Team T-shirts will be provided. Practices and games will be held at Roosevelt Park. There will be some out of town games and game times may vary. Parents will be responsible for transporting players to out of town games. This is a non-competitive league.

LOCATION: Roosevelt Park Diamonds  
 DATES: June 1 - July 23  
 DAY/TIME: Practice - Mon., Tues., & Thurs. from 9:00-10:30 a.m.  
 Games will vary starting the 3rd week.  
 AGE: 9-13 Division  
 FEES: \$55.00

### ADULT SOFTBALL LEAGUE:

Men's Slowpitch Monday, Wednesday & Thursday  
 Women's Slowpitch Tuesday  
 FEES: \$800/team and \$20/player

For more information or to register in any of these scheduled tournaments, contact Rob Johnson at 230-1859.

#### ADULT SOFTBALL TOURNAMENT SCHEDULE

Date	Type of Tournament	Entry Fee
June 20 - 21	Diamond Day MSP & WSP Invitational	
	12 Team Men's Rec II, III, IV Champ & Con (3GG)	\$225.00
	8 Team Women's Rec II, III, IV Champ & Con (3GG)	\$225.00

## Softball Dates To Remember

Apr 10	5:00pm	Men's Slowpitch Registration Deadline
Apr 10	5:00pm	Women's Slowpitch Registration Deadline
May 8	8-5pm	Men's Slowpitch: Balls, Scorebooks & Rule Books avail. for pickup
May 8	8-5pm	Women's Slowpitch: Balls, Scorebooks & Rule Books avail. for pickup
May 11	7:00pm	Men's Slowpitch League Play Begins (tentative)
May 12	6:45pm	Women's Slowpitch League Play Begins
May 22	5:00pm	Final Date for Roster Changes Men's & Women's Leagues
June 15	5:00pm	Registration Deadline for Tournaments
July 8	5:00pm	Registration Deadline for Men's & Women's State Softball Tournaments

## THEATRE

Disney's Aladdin Jr. is based on the 1992 Academy Award®-winning film and the 2014 hit Broadway show about the "diamond in the rough" street rat who learns that his true worth lies deep within.

Aladdin and his three friends are down on their luck until Aladdin discovers a magic lamp and the Genie who has the power to grant three wishes. Wanting to earn the respect of the princess, Jasmine, Aladdin embarks on an adventure that will test his will and his moral character. With expanded characters, new songs, and more thrills, this new adaptation of the beloved story will open up "a whole new world" for your young performers!

With abundant opportunities for imaginative sets and costumes, and a host of over the top roles for an expandable cast, there's a part for everyone in this dazzling adventure story.

Lake Region School for the Performing Arts

LR School for the Performing Arts presents **Aladdin Jr**  
 May 26 - June 4  
 Grades K - 12  
 Cost: \$65  
 Tshirts: \$12

#### Week 1

Date: May 26 - 29  
 Location: MSOD  
 Time: 10:00 - 3:30pm

#### Week 2

Date: June 1 - 4  
 Location: LRSC Auditorium  
 Time: 10:00 - 3:30pm

Showcase 6:00pm Thursday, June 4th  
 at LRSC Robert Fawcett Auditorium

Register online at [www.mikisdance.com](http://www.mikisdance.com)  
 or call Miki at 351-4712 or Valerie at 351-2843.  
 Students are encouraged to bring water, sack lunch & a snack. Sponsored by Lake Region Arts Council.

## ARTS & CRAFTS

### REGISTER ON-LINE (instructions inside front cover)

This program is designed for future artists to develop their creativity and artistic abilities along with a lot of fun for all.

INSTRUCTOR: Carlie Raven  
LOCATION: Lake Region Arts Center  
DATES: June 10 - July 7  
DAY/TIME/AGE: T & Th 9:30-10:30 a.m. 4-8 yrs  
T & Th 11:00-12:00 p.m. 4-8 yrs  
T & Th 1:00 -2:00 p.m. 4-8 yrs  
M & W 10:30-11:45 a.m. 9-15 yrs  
M & W 1:00 -2:15 p.m. 9-15 yrs  
FEES: \$40.00  
CLASS LIMIT: 20

## HOME ALONE: Are You Ready?

Planning to leave your kids home alone for the first time? Sign them up for Home Alone: Are You Ready? NDSU Extension Ramsey County, Lake Region Public Health, and other community partners are offering this educational opportunity for youth ages 9-12. This class will cover basic information kids need to stay safe and healthy while home alone. Youth will learn emergency preparedness, fun ways to stay active, healthy snack ideas, internet safety and much more. Each participant will assemble their own first aid kit to take home. Two sessions available, either morning or afternoon.

AGE: 9 and up  
LOCATION: Basement Mtg Rm of the RC Courthouse in Devils Lake.  
DATES: June 11  
TIME: 8:30-11:30 am or 12:30-3:30 pm.  
COST: \$10  
CLASS LIMIT: 20 each class

## BABYSITTING: My First Job

Are you new to the babysitting world, looking to brush up on your babysitting skills, or wanting to start a babysitting business? This is the class for you!!

During the one day course, youth will learn how to safely and responsibly care for infants & children. Youth will learn hands-on how to hold/handle infants, diapering, bottle-feeding, safety, discipline, how to manage a babysitting business & more. Successfully complete the curriculum of the American Heart Association Heartsaver First Aid, CPR & AED Program. Please bring your own lunch & come ready to fully participate in this full day of learning.

AGE: Youth 12-17  
LOCATION: Basement Mtg Rm of the RC Courthouse in Devils Lake.  
DATES: June 10  
TIME: 8:30am-4:30pm.  
COST: \$20  
CLASS LIMIT: 20

## JUNIOR CHEFS

### REGISTER ON-LINE (instructions inside front cover)

Have fun in the kitchen! The chefs will learn how to make all kinds of yummy snacks and much more. Students will learn kitchen safety, menu planning and measuring. Each chef will receive a complete booklet of recipes. Supplies are provided. Come join the fun.

INSTRUCTOR: TBD  
LOCATION: Ruger Activity Building  
DATES: Session I: June 1 - 11  
Session II: June 15 - 25  
DAY/TIME/AGE: M-W-Th 9:30-10:30a.m. 6-8 yrs  
Introduction to Cooking  
M-W-Th 2:30-3:30p.m. 7-9 yrs  
Introduction to Cooking  
M-T-W-Th 10:45-12:15p.m. 9-12 yrs  
Intermediate Cooking  
M-T-W-Th 12:45-2:15p.m. 9-12 yrs  
Intermediate Cooking  
FEES: \$40.00 (6-9 yrs.-Intro. Class)  
\$45.00 (9-12 yrs.-Intermediate Class)  
CLASS LIMIT: 12-Intro to Cooking; 15-Intermediate Cooking

## FUTURE FIREBIRDS VOLLEYBALL CAMP

### Grades 7 - 8 4:00pm - 5:30pm

June 3 @ Sweetwater Gym  
June 10 @ Sports Center  
June 17 @ Sports Center  
June 24 @ Sports Center  
\$40 / player

### Grades 3 - 6 9am - 10:30am

August 4 - 5 - 6 @ Sports Center  
\$30 / player

### Mail payment to:

Tangella Martinson, DLHS coach  
305 8th St NW  
Devils Lake, ND 58301  
Please note: VB Camp in memo.

# SUMMER CAMPS

## Fastbreak Basketball Camp May 26 - 29

Kindergarten -1 (Grade Completed)	8:00-9:15a.m.	\$35.00
Grades 2-4 (Grades Completed)	9:15-11:45a.m.	\$60.00
Grades 5-8 (Grades Completed)	1:00-4:00 p.m.	\$65.00

### Fastbreak League

June 1, 8, 15, 22, 29

\$50 / player

Grades 5-7 JH Division

Grades 8 - 12 Varsity Division

School Teams Only

### Girls Basketball Skills / Shooting Camp

June 1, 8, 15, 22, 29

\$25 / player

8:00am - 10:00am

Grades 6-12

Contact Justin Klein - 321-0001 or

justin.klein@dlschools.org

## ATHLETIC PERFORMANCE CAMP

**Program Goals:** Improve athletic performance of participants through use of strength training, speed and acceleration drills, agility drills, and metabolic conditioning activities. Proper instruction in strength and power movements will be first and foremost goal. For questions call: 701-662-1200

**Ages:** Grades 7-12

**Dates:** May 27 - July 30

**Days:** Monday-Friday

**Session Times:** 6:30-8:00 am, 8:00-9:30 am, or 12:00-1:30pm

**Location:** DLHS Weight Room & Loberg Track

**Coaches:** Cory Schuh, Brendon Flynn, Jenna Gerhardt

**Cost:** \$120 for sessions & T-Shirt

**Contact:** Cory Schuh at dlhs.atc@dlschools.org

## BOYS BB ELITE SKILLS CAMP

June 1 - 4 @ Sweetwater Gym

1st - 3rd grade (Fall of 26) 8:15am - 10:00am  
Monday - Thursday

4th - 8th grade (Fall of 26) 10:15am - 12:15pm  
Monday - Thursday

Cost \$100 / participant

Contact Dustin Brodina to register -  
331-1882 or dustin.brodina@dlschools.org

## LAKE REGION STATE COLLEGE SUMMER VOLLEYBALL CAMP

June 22 - 24, 2025

Grades 9-12: 8:00am – noon

Cost: \$150.00

Grades 6-8: 1:00pm – 3:00pm

Cost: \$100.00

The LRSC Royals Volleyball team will be hosting a camp that will focus on individual skill development, team play, and positional training. The camp is designed for each player to get quality, touches and learn to develop skills in all areas of volleyball: passing, serving, setting, hitting and defense.

Contact Steve Waddell @ 662-1402 or  
stevan.waddell@lrsc.edu

## LRSC ROYALS VOLLEYBALL PROSPECT'S CAMP

June 25: 9:00 am - 9:pm (Lunch & Dinner provided)

June 26: 8:00am - 5:00pm (Lunch provided)

Grades 9-12

Cost: \$250.00 for overnight stay in LRSC dorm room  
or \$200.00 for commuter option

The LRSC Royals volleyball coaching staff and players will be hosting a prospects camp for any volleyball players who are interested in a high level camp that will focus on advanced skills. This camp is for players who are interested in the college volleyball experience, and those who would like to compete against top competition in the area. There will be advanced skill development, positional training and team play. It is recommended that those who are attending camp, have varsity experience, but not required.

## JC'S SPORTS ACCELERATION

June 1 - July 24

Ages 9-18 (limited to 20 spots/session)

**Speed | Strength | Quickness | Agility  
for ALL Sports**

Session Times: 7:30-8:45 am

8:50-10:05 am 10:10-11:25am 11:30am - 12:45pm

Days: Monday, Wednesday & Thursday

@ Burdick Outdoor Arena

Cost: \$225

A \$100 non-refundable deposit to reserve spot by May 13th

Mail checks payable to:

Jennifer Carlson, 711 3rd Ave NE, Devils Lake, ND 58301

Contact Jennifer Carlson - 701-361-7855

jennifer.lm.carlson@dlschools.org

# GOLF

## REGISTER ON-LINE (instructions inside front cover)

The Devils Lake Park Board owns the Creel Bay Municipal Golf Course. This is an 18 hole, 72 par course located at 515 Country Club Road on the Northeast shores of Creel Bay. The course dates of operation are April 1st-October 31st weather permitting. Tee times can be booked up to 10 days in advance by calling the golf course at 662-2408 or online at www.creelbaygolf.com. The clubhouse is also available to rent year round for special events. For information regarding rental rates & availability of the clubhouse call 662-2408.

## 2026 RATES

### Season Passes:

Family (Kids 17 & Under)	\$775.00
Adult (18 & Over)	\$575.00
Youth (17 & Under)	\$175.00
College Student (18 & Over w/ ID)	\$225.00

### Green Fees:

	M - TH	F - S
<b>Adult (18 &amp; Over)</b>		
18 Hole	\$40.00	\$45.00
9 Hole	\$30.00	\$35.00
<b>Youth (17 &amp; Under)</b>		
18 Hole	\$20.00	\$25.00
9 Hole 12 & Under FREE with paid adult	\$15.00	\$20.00
Twilight Golf 18 Holes (Monday only) 5 - Close	\$ 25.00	
<b>Active Military / Senior Citizen 65+</b>		
18 Hole	\$25.00	\$30.00
9 Hole	\$18.00	\$23.00

### Cart Rental:

18 Hole	\$ 28.00
9 Hole	\$ 18.00
Trail Fee (Season Pass)	\$225.00

## ADULT GOLF LEAGUES

18 and over

### Men's League - May 12 - August 25

\$200 per team - 5 person teams  
\$10 per sub, handicapped

### Women's League - May 13 - August 26

\$100 per team - 2 person scramble team  
handicapped

*Non-members will have to pay  
green fees each night.*

Contact Rob @ 662-2408 to register.

## 2026 YOUTH GOLF LESSONS

The Devils Lake Park District along with Creel Bay Golf Course and Coyotee Flats Golf Center will be offering youth golf lessons this summer. Participants must provide their own golf clubs for both Areas of instruction at Coyotee Flats Golf Center and Creel Bay Golf Course. Participants must also provide their own golf balls when at Creel Bay Golf Course.

**INSTRUCTOR:** David Bitz  
**AGE:** 7 Years of age and older  
**DAYS:** Monday and Wednesday  
**DATES:** June 1 – July 15

June 1 - 24 @ Coyotee Flats Golf Center  
June 29 - July 15 @ Creel Bay Golf Course

**TIMES:** Time slots are available as follows at Coyotee Flats Golf Center June 1 - 24:

Session 1	9:00 – 9:40 am	<b>Beginner I</b> (No lessons)
Session 2	9:45 – 10:25 am	<b>Beginner II</b> (1-2 yrs lessons)
Session 3	10:30 – 11:10 am	<b>Intermediate</b> (2-3yrs lessons)
Session 4	11:15 – 11:55 am	<b>Advanced</b> (3+ yrs lessons)

Time at Creel Bay Golf Course will be same as driving range times. June 29 - July 15 for the lesson participants

**SESSION LIMIT:** Only 10 participants are allowed per time slot.

**REGISTRATION:** You must register for one of the Sessions since there are limits to participants.

**FEE:** \$80.00/participant

**JULY 15th**      **END OF YEAR TOURNAMENT**





## **DEVILS LAKE PARK BOARD KIDS FISHING CAMP INFORMATION**

August 2 - 6, 2026

Lakewood Park Bible Camp and Lakewood Beach

Supported by Lure 'em for Life in Partnership with ND Game & Fish



The Devils Lake Park Board will be hosting the 23rd Annual Kids Fishing Camp on August 2 - 6, 2026 on Creel Bay at Lakewood Bible Camp. The camp is open to all kids ages 8-13 years old at the time of camp. The camp fee will be \$375 per participant and registration deadline is July 17, 2026. The camp fee includes all lodging, meals & expenses to experience this unique week-long camp and \$25 for spending money for the concession stand. Limit of 40 participants. Lakewood Bible Camp is located 1 mile south and 2 miles west of Devils Lake of the east shore of Creel Bay.

ND Game & Fish Volunteers from 'Lure 'em for Life' Fish Club will provide classroom teachings and boats for this once in a lifetime opportunity for kids to enjoy the experience of a week long camp designed to teach kids about fishing as well as a fun-filled social experience. Kids will be housed in the beautiful Lakewood Bible Camp.

Educational sessions will be held on some of the following topics: Rules & Regulations, boat safety, life jackets & flotation devices, life jacket relays, line casting, fishing identification, fish anatomy, water structure, water clarity, fish habits, knot tying & testing of knots, tackle & equipment, spinner making, fly tying, cleaning, filleting, storing cooking fish, shore fishing, bottom fishing & casting. There will also be some golfing with casting rods.

Participants will also spend about 3 - 4 hours a day on the lake with one day of fishing all day (break for lunch) using bottom bouncers, pulling crank baits, jigs, using underwater cameras, depth finders, sonar and much more. There will also be a fish fry for one meal.

Campers are required to bring bedding (sleeping bag is fine), pillow, informal clothing, sweater, jacket, bathrobe, raincoat, flashlight, towels, soap, wash clothes, toothbrush, toothpaste, swim wear, sunscreen & extra pair of sneakers. Lure 'em for Life will provide: life jackets, rods & reels, a hat for each camper, bait & some tackle. (Campers must have long pants, closed toe shoes & a jacket to wear in the boats).

Campers are encouraged to bring a friend with them to enjoy this memorable event. Camp supervisors will make every effort to let friends participate together and share living quarters. Camper sites at Lakewood Bible Camp are also available for parents. Contact Lakewood Bible Camp at 662-2296 for further information about camping. Any parent interested in chaperoning are asked to call Josh Widmer at 701-662-8243.

The fishing camp will run from 8:00am to 4:30pm Monday - Wednesday, and Thursday 8:00am to 11:00am. Nightly activities will be available each night including: basketball, soccer, softball, game room with pool table, foosball and ping-pong, sand volleyball & other activities. There will also be some camp fire activities. All campers are required to be in their sleeping quarters by 10:00pm. Campers will be supervised 24 hours a day and no campers are allowed to leave the camp unless special arrangements have been made. No cell phones or electronic devices are allowed at the camp. If needed, camp supervisors will provide phone service to a child if they need it.

Campers will check -in at Lakewood Bible Camp on Sunday, August 2, 2026 between 4:30pm - 5:30pm. Campers will depart on Thursday. Parents are asked to pick up their child on Thursday between 10:00 - 11:00am.

Registration forms are available at the Recreation Office in Devils Lake, ND after May 4th. For further information on the camp please call 701-662-8243. Devils Lake Park Board mailing address is 807 Hwy 20 S Suite 1, Devils Lake, ND. 58301



**LAKE  
REGION**  
public library

423 7<sup>th</sup> St NE, Devils Lake, ND 58301 - (701) 662-2220



**GET READY TO DIG INTO AN UNFORGETTABLE SUMMER**  
**WITH THIS YEAR'S SUMMER READING PROGRAM THEME: *UNEARTH A STORY***

Join us at the library this summer as we discover stories, uncover hidden histories, and journey deep into our imaginations. Our Summer Reading Program is designed to keep children, teens, and adults engaged in reading all summer long. Participants can set reading goals, track their progress, and earn fun rewards along the way.

Lake Region Public Library already has fun and educational entertainment on our calendar for June & July, including our annual **Kick-off Messtival**, **Yoga with Joanna Berger**, the return of **Brainy Ink**, a first-time visit from the **Badlands Dinosaur Museum** – and more!

Registration opens in May, and participation is free and open to anyone entering kindergarten and older. If you live outside of Ramsey County and don't have an LRPL library card, no problem—your child can receive a free temporary card just for the summer.

**SUMMER READING KICK-OFF MESSTIVAL: SATURDAY, MAY 30TH**  
**SUMMER READING DATES: MONDAY, JUNE 1ST - FRIDAY, JULY 24<sup>TH</sup>**

# 14K Fallen Soldiers Run / Walk



Post 756



## May 30, 2026

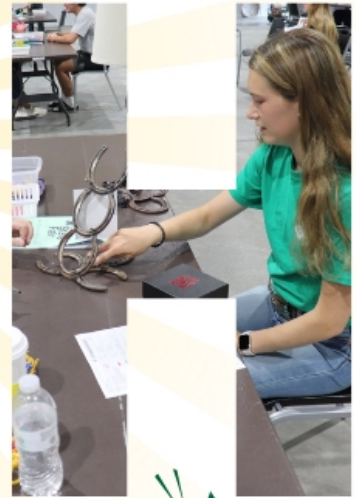
- Run starts at 7:30am @ The Burdick Arena
- \$25 / person \$15 / youth (12 & under)
- **Early Registration** May 29, 2026: 5:00 - 6:30pm @ Burdick Arena
- Register by May 18, 2026 to guarantee a t-shirt
- Proceeds will benefit: ND National Guard Foundation

**Run / Walk Course**  
Start at Burdick Arena  
Turn South on College Drive  
Cross Hwy 2 @ John Deere  
Follow Bike Path to Lakewood  
Proceed thru Lakewood to back gates of Camp Grafton  
End at Camp Grafton Edwards House. Refreshments Provided.  
Transportation provided back to Burdick Arena

For more information & registration forms: [www.facebook.com/DevilsLakeFallenSoldierRun](http://www.facebook.com/DevilsLakeFallenSoldierRun)  
<http://fallensoldiers14k.weebly.com> | Mike 701-351-0481 • Ben 701-351-0694

# SAVE THE DATE

Ramsey  
County  
4-H Achievement Days  
June 17th-19th, 2026



 Ramsey County Fairgrounds, 7823 Hwy 19, Devils Lake



## HUNTERS SAFETY COURSES Open to all ages.

Courses are led by volunteer instructors at varying times throughout the year.

The best way for students to find out about courses is by signing up for text/email alerts at: [public.govdelivery.com/accounts/NDGF/subscriber/new](https://public.govdelivery.com/accounts/NDGF/subscriber/new)

For all things hunter education:  
[gf.nd.gov/education/hunter](https://gf.nd.gov/education/hunter)

# YOUTH HOCKEY LEAGUES

## LEAGUE HOCKEY:

The Devils Lake Youth Hockey Program will begin the week of October 12 and is run by the Devils Lake Blue Line Club. Registration dates and times for this program will be announced in the fall.

AGE	LEAGUE
5 & 6 year olds	Termite
7 & 8 year olds	Mites
9 & 10 year olds	Squirts
11 & 12 year olds	Pee Wees
13 & 14 year olds	Bantams

**DEVILS LAKE  
BLUE LINE CLUB**

The Devils Lake Blue Line Club is an organization established to support youth hockey in Devils Lake. For more information refer to [www.dlblue.com](http://www.dlblue.com).

**\*\*PLEASE NOTE\*\*** Parents must complete Blue Line Club Registration Form and USA Hockey Consent to Treat Form. All players regardless of age must register as an Ice Player through USA Hockey and must provide a copy of USA Hockey Registration during the youth hockey sign-up held by the Devils Lake Blue Line Club.

## YOUTH HOCKEY EQUIPMENT CHECKOUT:

The Devils Lake Blue Line Club has provided youth hockey equipment to be rented out for youth that participate in the Devils Lake Hockey Programs. Dates this year for equipment checkout will be announced. There is a rental fee on all equipment.

## SUMMER ICE:

June 8 - 28, 2026. For more info refer to [www.dlblue.com](http://www.dlblue.com)

**Come Skate With Us!**



**WWW.LRSKATING.COM**

Log on to our website for more information or to register!

<p><b>2 CLASSES PER WEEK:</b> -Wednesdays &amp; Sundays- 5+ Hours of Ice Time Available Each Week</p>	<p><b>MEMBERSHIP:</b> -Individual or Family- Session 1, Session 2 or Full Season</p>
---	--

---

Learn to Skate Group Classes      Hockey Skills

Competitive Skating      Private Lessons      US FIGURE SKATING

**ONLINE REGISTRATION OPENS AUGUST 1**  
-FULL SEASON RUNS OCTOBER THROUGH MARCH-

**LRFSC**      QUESTIONS?      

Please Contact Us!      [lrfscskatingdirector@gmail.com](mailto:lrfscskatingdirector@gmail.com)

# ADULT PROGRAMS

## ADULT VOLLEYBALL LEAGUES

There will be two sessions of adult volleyball. Fall League begins the week of September 14th. Winter League begins the week of January 18th. FEE: \$160/team ( Leagues without referees)

## ADULT SAND VOLLEYBALL

The Devils Lake Park Board will be offering an Adult Sand Volleyball League the months of June, July & early August in Roosevelt Park. Games will be held on Thursday evenings, Starting June 4th.

Players form their own teams. More information will be available at a later date. Fee: \$160 / team

## ADULT HOCKEY LEAGUE: Men's City League

This league is for players 18 years of age and older who want to play recreational hockey. Interested players must register in the Recreation Office by 5:00 p.m. on Wednesday, November 4, 2026. Once players are registered, teams will be formed through a draft. All players are **REQUIRED** to wear hockey helmets in this league. Also, registrations must be accompanied by full payment of league fees. Tentative starting date is Sunday, November 15th. League games will be played on Sunday evenings. FEE: \$65 per player.

## SENIOR SWIM:

The Devils Lake Park Board offers a senior swim program for anyone 55 years & older. This program is held September – May at the ND School for Deaf on Mondays, Tuesdays and Thursdays each week. The program is divided into two sessions. Participants can sign up for both sessions for \$150 or for one session for \$85. Water Aerobics is held from 9:00-11:00 am and General Swimming is held from 11:00-12:00 pm. Participants can sign up at the Recreation Office in Dockside Entertainment.

## TAE KWON DO

ATA Tae kwon do is run by Ryan Arndt. Senior Master Arndt is a 7th degree black belt. They are located at the City Plaza building along Highway 2 East. Classes run year round. Belt testing is held every 12 weeks. This program is open to boys and girls ages 4 all the way up to adults. Children learn about stranger danger, what to do when a bully is bothering you, and even where to go for help. Adults & teens can learn things such as: self-defense, confidence, and it's a great workout! To register or for more information please call the school at 662-1027.

# ICE ARENAS

## ICE SKATING AND ICE SCHEDULE INFORMATION:

Weekly ice schedules are available to take home at the Burdick Arena and Bill Jerome Arena for those interested. Online schedules are also posted at [diparkboard.org](http://diparkboard.org). Please note the ice schedule is subject to change without prior notice.

## PRE-SCHOOL SKATING:

Parents or guardians must be on the ice with their children during pre-school skating. This program is sponsored by the Devils Lake Park Board and there is NO FEE for this program. The program will start in November and continues through early March. Check weekly ice schedules for days & times.

## PUBLIC ICE SKATING:

The Burdick Arena and the Bill Jerome Arena will be open for Public Skating during the skating season. Days and times for Public Skating will be established at a later date. Public Ice Skating will be listed weekly in the ice schedule.

FEES:			
17 & Under .....	\$4.00	Season Ticket .....	\$45.00
Adult (18 & Over) .....	\$4.00	Season Ticket .....	\$45.00
Family .....	N/A	Season Ticket .....	\$85.00

## Rental Skates:

We have skates for rent in a variety of youth and adult sizes. These are available during Public Skating and Skating Club Family Skate for \$2.00 per pair.



# INDOOR ICE RENTALS:

## Burdick Arena:

The ice at the Burdick may be rented when available by calling the Recreation Office at 662-8243. Ice rental hourly fees for the Burdick are as follows:

Monday – Friday	
6:00 a.m. – 3:30 p.m.....	\$50.00
3:30 p.m. – 9:00 p.m.....	\$80.00
9:00 p.m. – 12 Midnight.....	\$50.00
Saturday – Sunday	
6:00 a.m. – 10:00 a.m.....	\$50.00
10:00 a.m. – 9:00 p.m.....	\$80.00
9:00 p.m. – 12 midnight.....	\$50.00

## Bill Jerome Arena:

The ice at the Bill Jerome Arena may be rented when available by calling the Recreation Office at 662-8243. Ice rental fees are as follows:

Monday – Sunday (all hours).....	\$40.00
----------------------------------	---------

## Outdoor Skating Arena:

Ruger Park has one lighted rink with a warming house. Lakewood Park has one lighted rink and the Burdick Arena has a lighted rink. The skating rinks are open to the public and will open as soon as weather permits.

Ruger Park Warming House hours and lighted rink schedule:  
 Monday – Friday .....5:00 – 9:00 p.m.  
 Saturday.....12:00 – 9:00 p.m.  
 Sunday .....12:00 – 9:00 p.m.  
 The Ruger Park Warming House will be closed when the actual temperature is 10 degrees below zero or when the wind chill is 20 degrees below zero or colder.

# WINTER SWIMMING

The Devils Lake Park Board offers swimming at the ND School for the Deaf on Saturday afternoon's beginning in November and continuing through March. Lap swimming is held from 12 noon – 1pm and Open Swimming is held from 1pm-3pm. The cost is \$3.00 for open / \$2.00 for lap.





*Devils Lake Parks  
& Burdick Arena*



Roosevelt Park



Ruger Park



Burdick Arena

**2026-2027 FALL,  
WINTER AND SPRING**

**YOUTH AFTER SCHOOL PROGRAMS**  
REGISTER ON-LINE (instructions inside front cover)

These programs are designed to introduce participants to the basic skills of a particular sport. In addition, emphasis is placed on participants having fun and having comparable playing time. Listed below are the programs offered, additional information and registration forms will be sent out through the school systems in Devils Lake.

We also encourage parents who are interested in coaching to contact the Recreation Office. We are continually in need of good qualified and dependable coaches. For more information, contact the Recreation Office at 662-8243.

**FLAG FOOTBALL**

Dates: September and October  
Grades: Second, Third and Fourth

**GIRLS BASKETBALL**

Dates: September, October, November  
Grades: Third through Sixth

**BOYS BASKETBALL**

Dates: December, January, February  
Grades: Third through Sixth

**VOLLEYBALL**

Dates: March and April  
Grades: Third through Sixth

**SOCCER**

Date: April and May  
Grades: First Through Sixth

**COED BASKETBALL**

Dates: March and April  
Grades: First and Second



FAMILY ENTERTAINMENT CENTER  
 807 HIGHWAY 20 SOUTH  
 ON THE JUNCTION OF HIGHWAYS 2 AND 20  
 701-662-4835 - DOCKSIDEDL@GONDTC.COM  
 WWW.DOCKSIDEDL.COM

**2026 Membership & Day Passes**

	<b>ANNUAL</b>	<b>MONTH</b>	<b>DAY PASS</b>
<b>Family</b> (household members)	<b>\$225</b>	<b>\$30</b>	<b>\$8</b>
<b>Individual</b>	<b>\$175</b>	<b>\$25</b>	<b>\$5</b>
<b>Discounted</b> Senior 55+, Student, Active Military (valid id required)	<b>\$125</b>	<b>\$20</b>	
<b>Senior Couple</b> <b>Military Family</b>	<b>\$200</b>	<b>\$25</b>	

**BOWLING**  
**MULTI-SPORT SIMULATORS**  
**WALKING TRACK**  
**INDOOR PLAYGROUND**  
**ARCADE GAMES**  
**PICKLEBALL COURTS**  
**MULTI-USE SPORT COURT**  
**COMMUNITY/PARTY ROOMS**  
**CONCESSIONS**

*Bowling* **MON-THUR** **FRI-SUN**  
**Member** **\$12/hr** **\$14/hr**

**Non-member** **\$16/hr** **\$18/hr**  
 Prices are per lane

*Simulators* **HALF HOUR** **FULL HOUR**  
**Member** **\$10** **\$20**

**Non-member** **\$15** **\$30**  
 Prices are per bay

**MEMBERSHIP INCLUDES**

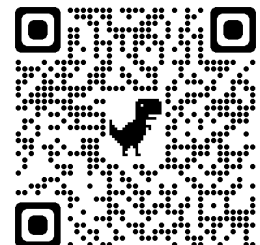
- Use of Facility
  - Walking Track
  - Indoor Playground
  - Pickleball/Sport court
- For annual and monthly members benefits only:**
- Discounted rates on simulator and bowling rentals
  - Discount rates on party rentals
  - Discounted rates on special events

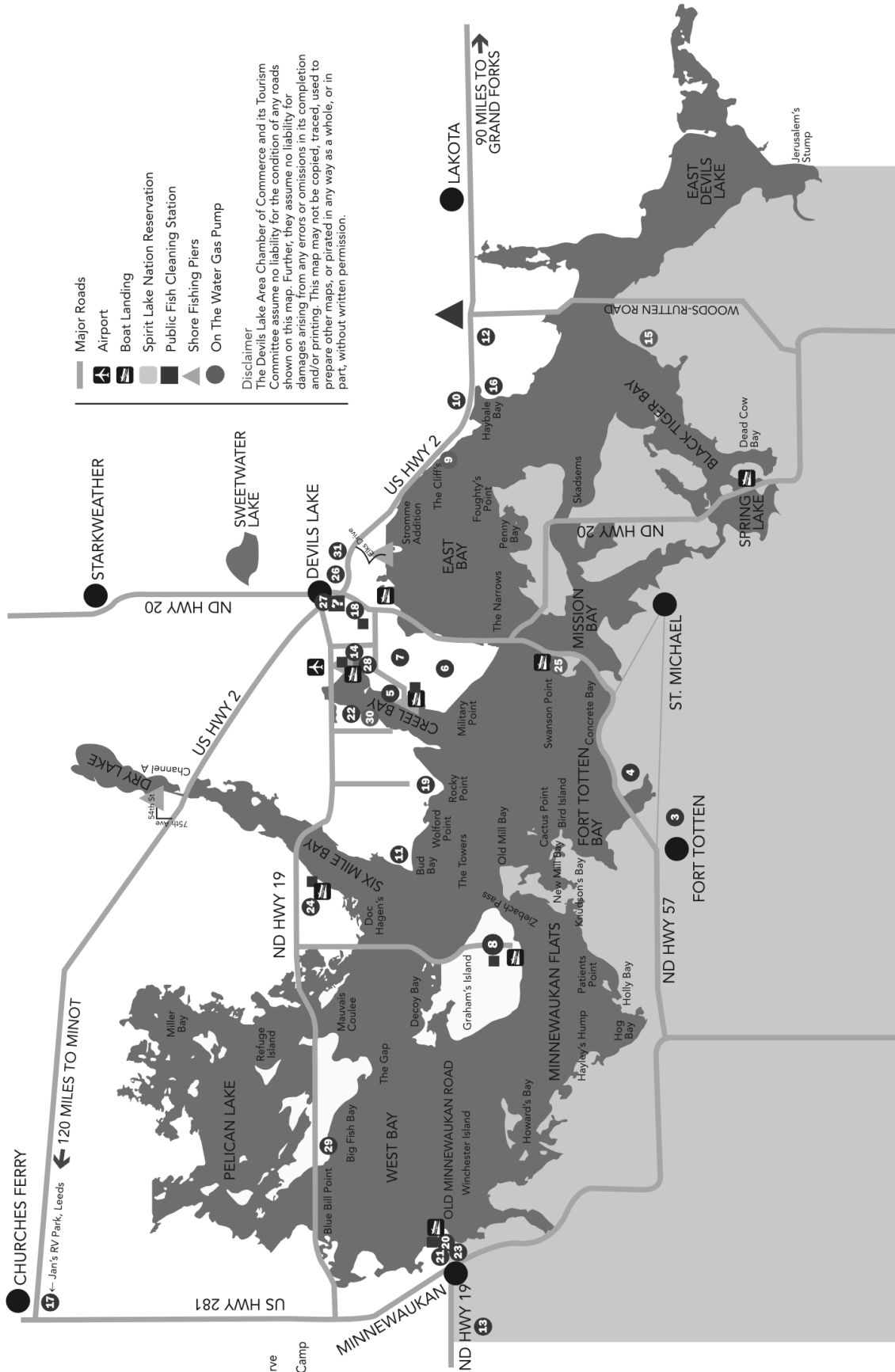
**HOURS**

<b>Monday- Thursday</b>	8am-9pm
<b>Friday</b>	8am-10pm
<b>Saturday</b>	9am-10pm
<b>Sunday</b>	1pm-8pm

**VISIT US AT WWW.DOCKSIDEDL.COM**

**OR SCAN QR CODE**





- Major Roads
- Airport
- Boat Landing
- Spirit Lake National Reservation
- Public Fish Cleaning Station
- Shore Fishing Piers
- On The Water Gas Pump

**Disclaimer**  
 The Devils Lake Area Chamber of Commerce and its Tourism Committee assume no liability for the condition of any roads shown on this map. Further, they assume no liability for damages arising from any errors or omissions in its completion and/or printing. This map may not be copied, traced, used to prepare other maps, or pirated in any way as a whole, or in part, without written permission.

- Information Centers**
- 1. Devils Lake Visitor Center & Chamber of Commerce
  - 2. Minnie H Rest Area
- Lake Region Points of Interest**
- 3. Fort Totten State Historic Site, Museum & Little Theater
  - 4. Sullys Hill National Game Preserve
  - 5. Creel Bay Golf Course
  - 6. Camp Graton National Guard Camp
  - 7. Lakewood Bible Camp

- State Campground**
- 8. Graham's Island State Park

- Private Campgrounds, Cabins, Lodges & Resorts**
- 9. Ackerman Acres
  - 10. APRV Campground
  - 11. Bayview Resort
  - 12. Bry's Guide Service/ Fish Rehab Lodge
  - 13. Country RV
  - 14. Eagle Bend Campground
  - 15. Eastbay Campground
  - 16. Haybale Heights
  - 17. Jan's RV Park - Leeds ND
  - 19. Lakeview Lodge
  - 20. McQuoid Outdoors
  - 21. Perch Eyes Guide Service
  - 22. Peterson Woods
  - 23. Reel'm Inn
  - 24. Six Mile Bay Campground
  - 25. Spirit Lake Casino & Resort
  - 28. Walleye Junction
  - 29. West Bay Resort
  - 30. Woodland Resort

- Bait Shops**
- 18. Ed's Bait Shop
  - 21. JJ's Bait Shop
  - 8. Graham's Island State Park
  - 10. Ackerman Acres
  - 30. Woodland Resort
  - 25. Spirit Lake Casino
  - 26. Pete's Bait Shop
  - 27. Newby's Ace Hardware
  - 31. Cenex East Travel Plaza

